

iLivTouch®

Supporting Early Diagnosis, Prevention, Treatment, and Recovery in Liver Disease

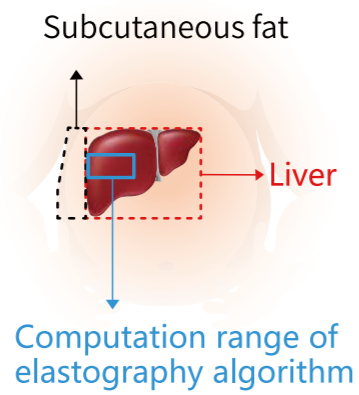
Signature Wideband Probe

- Wideband Frequency: 1.5-5MHz
- One probe scans all (adults, overweight/obese, children)
- Efficient and convenient
- Cost-effective



Scientific Algorithm

- Reduce the impact of the subcutaneous fat on the detection, improving measurement accuracy



Scientific Locating Method*

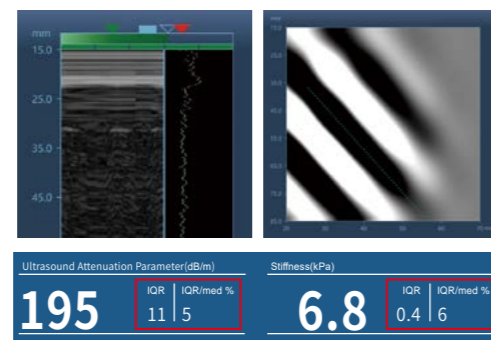
- Ultrasound guidance
- Reduce errors caused by blind tests and operator's experience
- Avoid cysts, nodules, large blood vessels and other non-liver tissues, improving accuracy

*Available on specific models



Multiple Quality Control

- A mode/M mode/E mode
- Pressure Indicator
- IQR/Med
- Success Rate



iLivTouch®

Multiple Models for Diverse Clinical Scenarios

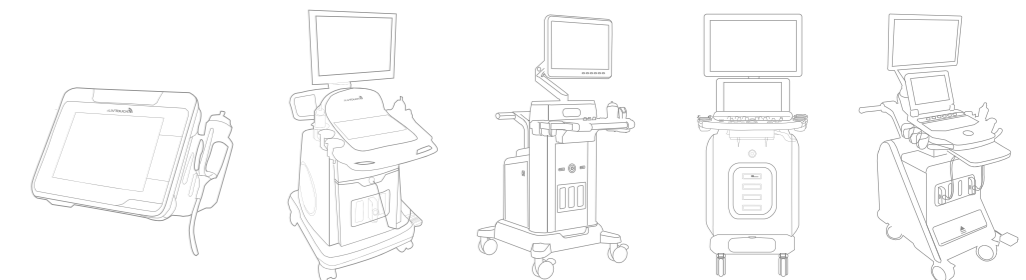
2 in 1 Fusion Probe	Multi-Organ Utility	Guided Detection Extended Functions	Portable Compactness
FH Series	Plus Series	Pro Series	FT Series
			FT/Mini Series

ABOUT HISKY

<p>340+</p> <p>Peer-Reviewed Publications Since 2014</p>	<p>600+</p> <p>Patent Have Been Obtained and Applied Globally</p>
<p>5000+</p> <p>Hospitals & Institutes Equipped With Hisky Products</p>	<p>60+</p> <p>Countries and Regions are Covered</p>

U.S. FDA 510(k) Clearance CE 0123

The U.S. FDA 510(k) clearance is applicable only to specific models: FT9000, FT100, and Mini series.



iLivTouch® in Hepatology
Advancing Non-Invasive Liver Care

Chronic Liver Disease: A Growing Global Health Challenge

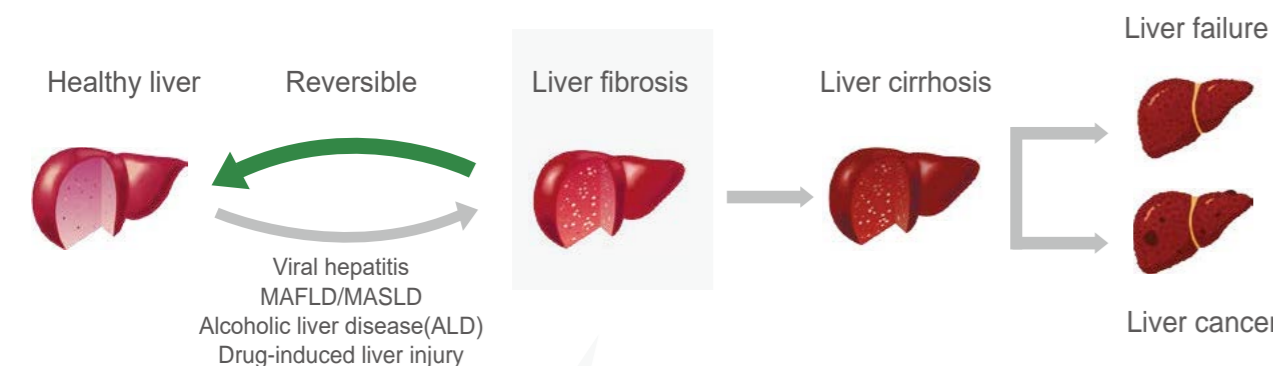


Liver Health Killer: Liver Fibrosis

Liver fibrosis is the common pathological process in various chronic liver diseases leading to liver cirrhosis.

“ Anyone who can stop or delay liver fibrosis would be able to cure most chronic liver diseases. ”

Early Detection is Key to Slowing the Progression of Liver Disease



- It is clinically acknowledged that the early and middle stages of liver fibrosis are reversible.
- Early diagnosis and treatment of liver fibrosis can prevent chronic liver diseases from deteriorating into liver cirrhosis, liver cancer and liver failure.

[1] <https://www.who.int/news-room/fact-sheets/detail/hepatitis-b>
 [2] <https://www.who.int/news-room/fact-sheets/detail/hepatitis-c>
 [3] Huang M et al, Intern Emerg Med. 2025 Jun;20(4):1013-1024.

Challenges in Existing Diagnostic Methods

Liver Biopsy	Serological Markers	Ultrasound
<ul style="list-style-type: none"> Invasive examination Sampling errors Not for daily follow-up 	<ul style="list-style-type: none"> Low accuracy Not liver specific Unable to distinguish severity 	<ul style="list-style-type: none"> Low sensitivity in diagnosing early- and mid- stage fibrosis. Difficult to detect steatosis when it's below 30%.

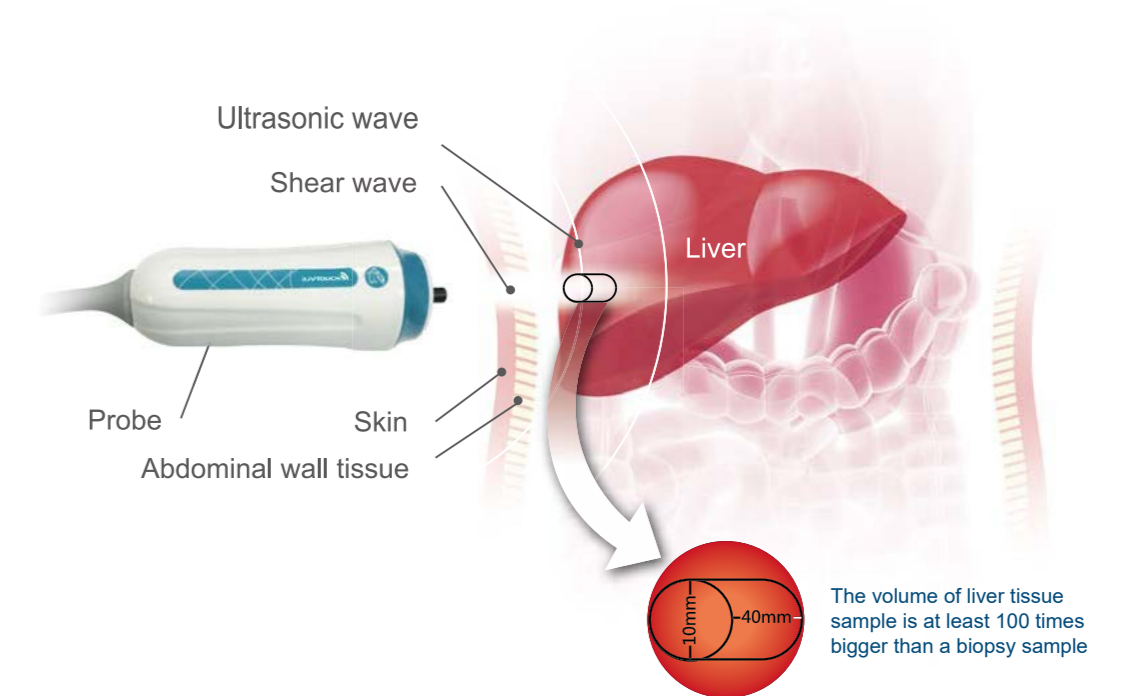
TE (Vibration-Controlled Transient Elastography) based iLivTouch® Advantages

Non-invasive painless	Quantitative results	High accuracy
---------------------------------	--------------------------------	-------------------------

TE in Hepatology: Recognized Globally, Trusted Clinically

WHO APASL EASL CMA AASLD WFUMB	<p>231+ Guidelines/Consensus Mentioning TE</p>	<p>TE Technology/ Fibrosis assessment</p> <p>31</p> <p>MASLD</p> <p>46</p>	<p>Viral Hepatitis</p> <p>71</p> <p>Liver Cancer/ALD/Others.</p> <p>83</p>
---	---	--	--

iLivTouch® Precise Detection for Liver Fibrosis and Steatosis



<p>LSM Liver Stiffness Measurement</p> <p>iLivTouch® assesses liver fibrosis by tracking shear wave propagation speed to quantify tissue stiffness, giving LSM result.</p> <p>Stiffness(kPa)</p> <p>8.4 IQR 0.1 IQR/med % 1</p>	<p>UAP Ultrasound Attenuation Parameter</p> <p>iLivTouch® evaluates steatosis by analyzing ultrasound signal attenuation during liver tissue penetration and applying a fat attenuation model, giving UAP result.</p> <p>Ultrasound Attenuation Parameter(dB/m)</p> <p>200 IQR 6 IQR/med % 3</p>
---	--