



NEW research function

LivQ-box LIID

Liver disease Quantitative - box
Liver Inflammatory InDex

*A reliable and innovative
non-invasive solution for
diagnosing MASH.*



Metabolic Dysfunction-Associated Steatohepatitis (MASH), a progressive liver disease linked to obesity and insulin resistance, silently drives liver fibrosis, cirrhosis, and cancer, affecting 1 in 5 adults with fatty liver disease globally.

i MASH may lead to serious conditions



Cirrhosis

~ 20% of individuals diagnosed with MASH and significant fibrosis may progress to cirrhosis within a period as brief as 2 years.

Liver cancer

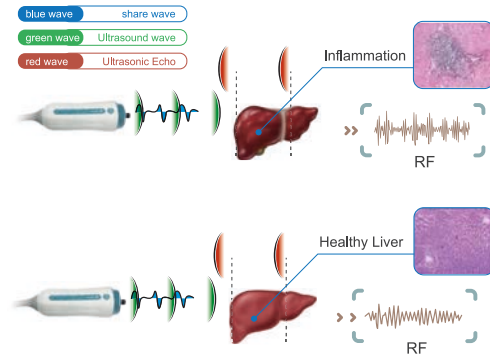
~12.5% of MASH-related cirrhosis patients may develop HCC within 4 years, but liver cancer can also emerge in non-cirrhotic MASH cases.

LivQ-box LIID

A novel, non-invasive, and practical method for identifying MASH

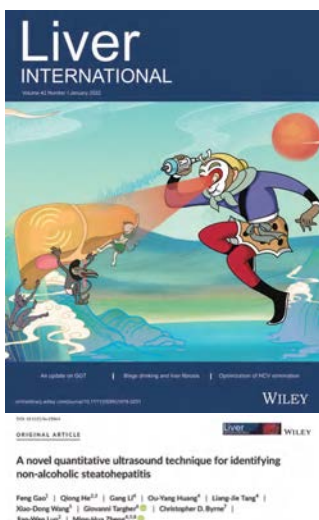
Pioneering Technical Pathway

- ✓ iLivTouch® stimulates ultrasound to pass through liver tissue to generate different signal waves and collect radio frequency data (RF data)
- ✓ LivQ-box deal with huge amounts of RF data, which can map liver tissue microstructural changes sensitively and accurately
- ✓ Among which, LivQ-box LIID, through preliminary clinical validation, can be used to assess liver inflammation, particularly in cases of MASH



Evidence-Based Innovation

A Novel Non-invasive Quantitative Assessment Approach for Inflammation: The QUS Score (LIID Parameter) Effectively Reflects Liver Inflammation Activity



Main result

AUROC= **0.816**

The RF-based LivQ-box LIID demonstrated robust diagnostic accuracy for histologically confirmed MASH, achieving an AUROC of 0.816 (95% CI 0.725-0.906) in independent validation against liver biopsy.

6.0 **Rule out MASH**

A cut-off of 6 for MASH exclusion showed 90.5% sensitivity and 91.0% NPV.

7.5 **Diagnose MASH**

A cut-off of 7.5 for MASH diagnosis showed 94.5% specificity and 75.0% PPV.